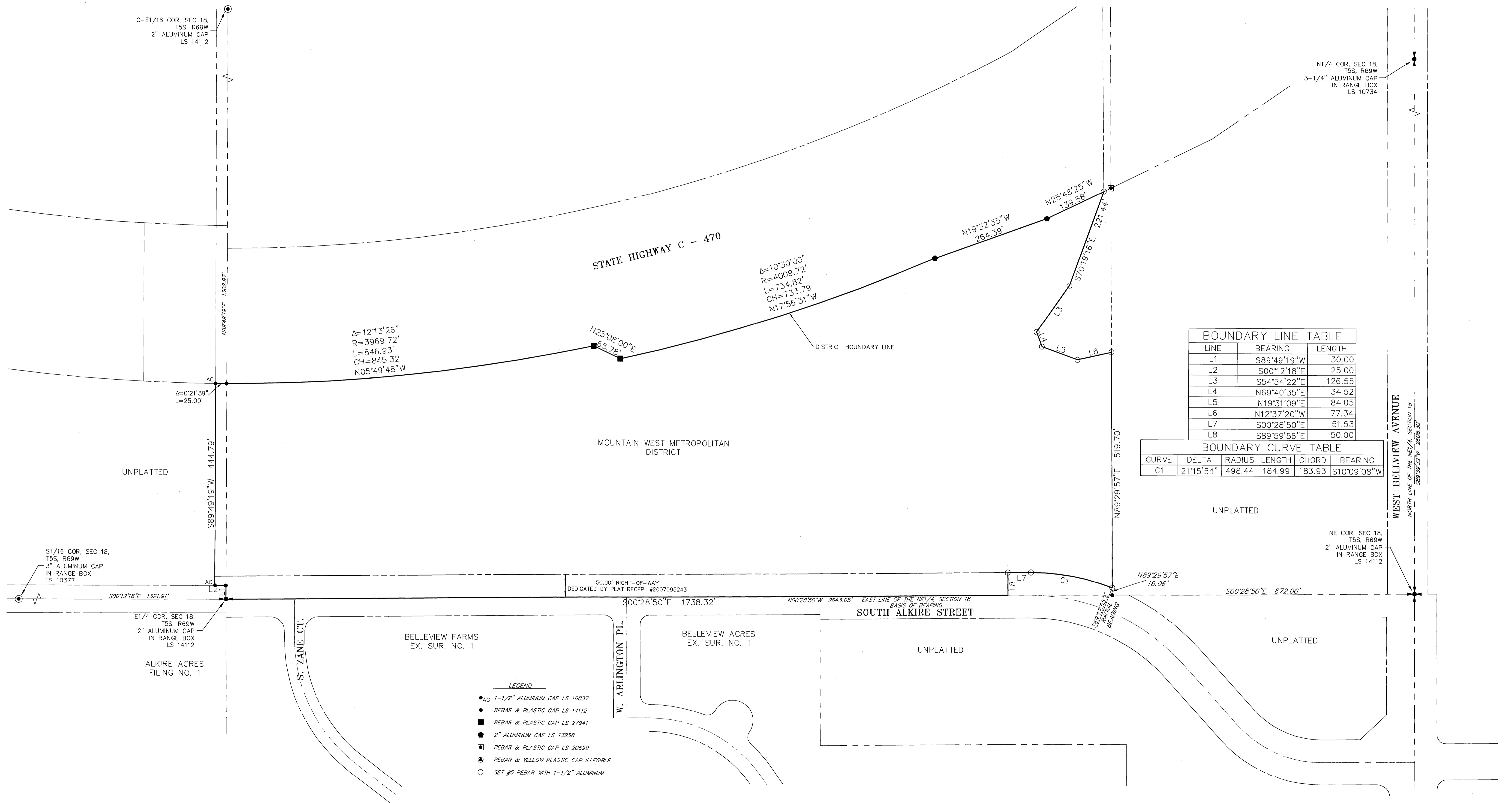


# MOUNTAIN WEST METROPOLITAN DISTRICT

A SUBDIVISION OF LAND KNOWN AS THE MOUNTAIN WEST BUSINESS CENTER RECORDED AT RECEP. #2007095243 AS GENERALLY SHOWN HERE ON AND BEING LOCATED IN A PORTION OF THE NE1/4 OF SECTION 18, TOWNSHIP 5 SOUTH, RANGE 69 WEST OF THE 6TH PRINCIPAL MERIDIAN COUNTY OF JEFFERSON, STATE OF COLORADO



**BOUNDARY LINE TABLE**

LINE	BEARING	LENGTH
L1	S89°49'19"W	30.00
L2	S00°12'18"E	25.00
L3	S54°54'22"E	126.55
L4	N69°40'35"E	34.52
L5	N19°31'09"E	84.05
L6	N12°37'20"W	77.34
L7	S00°28'50"E	51.53
L8	S89°59'56"E	50.00

**BOUNDARY CURVE TABLE**

CURVE	DELTA	RADIUS	LENGTH	CHORD	BEARING
C1	21°15'54"	498.44	184.99	183.93	S10°09'08"W

- LEGEND**
- AC 1-1/2" ALUMINUM CAP LS 16837
  - REBAR & PLASTIC CAP LS 14112
  - REBAR & PLASTIC CAP LS 27941
  - 2" ALUMINUM CAP LS 13258
  - REBAR & PLASTIC CAP LS 20699
  - REBAR & YELLOW PLASTIC CAP ILLEGIBLE
  - SET #5 REBAR WITH 1-1/2" ALUMINUM

